

Electronic expansion valve with built-in solar container unit





Electronic expansion valve with built-in solar container unit

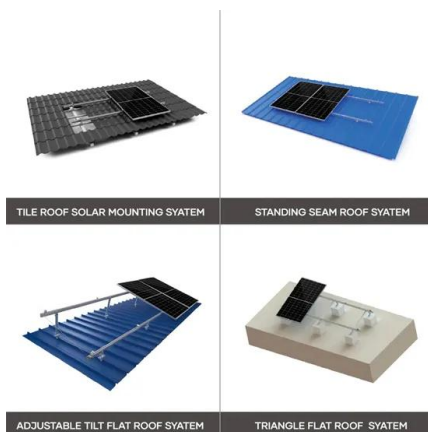


Electronic Expansion Valves (HVAC EEV): The Basics

In the realm of HVAC systems, understanding the role and functionality of Electronic Expansion Valves (EEVs) is crucial for achieving optimal cooling performance. These innovative components are ...

Mastering Electronic Expansion Valves: Installation and ...

Unlock precise refrigerant control by installing and troubleshooting electronic expansion valves. Learn advanced setup, calibration, and diagnostic ...



connectivity, monitoring and remote management systems

The CAREL E2V-smart series electronic expansion valves combine the renowned reliability of the CAREL E2V with the versatility of a removable cartridge, covering a range of cooling capacities from ...

How to select the correct Electronic Expansion Valve? , Daikin

Showcase/Evaporator capacity Pressure drop across the valve. a. $\Delta p_{valve} = p_c - (p_e + \Delta p_1 + \Delta p_3 + \Delta p_4)$ b. The pressure drop across the liquid line and the distributor system must be



calculated on the ...



An electronic expansion valve modeling framework development using

Abstract Electronic expansion valves (EEV) are widely used in variable refrigerant flow systems (VRF) to control the mass flow rate of each indoor unit. EEV model is used to predict the ...

EEV , Find technical documents for Samsung HVAC Electronic Expansion

Electronic Expansion Valve Kits , Precisely control the flow of refrigerant into the evaporator with an EEV, for use with Samsung HVAC VRF systems



Electronic Expansion Valve Troubleshooting

Electronic expansion valves (or EEVs) are metering devices that you'll find in a variety of modern HVAC equipment, including heat pumps, VRF units, inverter mini splits, and chillers. This ...



Multi V4 Indoor Unit EEV(Electronic Expansion Valve)

In this video, I check Multi V4 Indoor Unit EEV spare path for replacements. This is the EEV service part that we bring for replacement. Please also check out

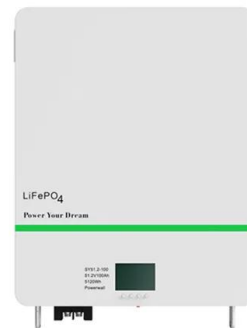


What Is a Thermostatic Expansion Valve (TXV)? , American Standard®

EEVs control the flow of refrigerant in response to signals from an electronic controller which electronically opens and closes a needle valve. American Standard cooling systems use an ...

Operating and Service Manual

Do not operate or maintain this refrigeration unit until you have familiarized yourself completely with the equipment and operation of this unit by reading the instructions in this manual. Do not perform any ...



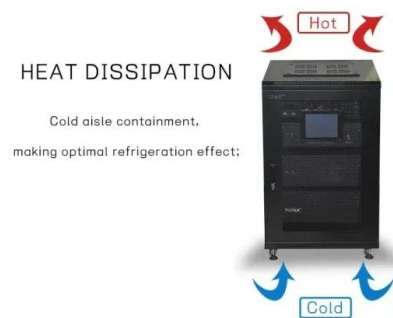
electronic expansion valve

The CAREL E2V-smart series electronic expansion valves combine the renowned reliability of the CAREL E2V with the versatility of a removable cartridge, covering a range of cooling capacities from ...



Electronic Expansion Valves (HVAC EEV): The Basics

Electronic Expansion Valves are sophisticated devices that control the amount of refrigerant entering the evaporator coil based on real-time data from various ...



A Complete Guide to Electronic Expansion Valve

They use a stepper motor, which is controlled by an electronic controller, to open and close the valve port. The stepper motor rotates in small increments, allowing for precise adjustments ...

Comprehensive Guide to Electronic Expansion Valves (EEVs): ...

Electronic Expansion Valves (EEVs) offer precise control, energy savings, and advanced features for modern refrigeration needs. In this post, we'll explore what makes EEVs a game-changer.



Electronic expansion valves (EEV) , Balanced ETS valve

A range of large electric expansion valves designed to stand a higher minimum operating pressure drop, available with S-curve and linear flow, and featuring advanced serviceability characteristics.



What Is a Thermostatic Expansion Valve (TXV)?

It more precisely controls the refrigerant flow to the evaporator. EEVs control the flow of refrigerant in response to signals from an electronic controller which ...



Installation Instructions Electronic Expansion Valve (EXV)

Introduction Read this manual thoroughly before operating or servicing this unit. Warnings, Cautions, and Notices fety advisories appear throughout this manual as required. Your personal safety and the ...



How to select the correct Electronic Expansion Valve? , Daikin

Zeas Condensing unit and Conveni-pack unit provides a higher undercooled liquid to the evaporators than traditional systems. This needs to be taken into account when selecting the correct expansion ...



Electronic Expansion System (EES) EcoFlow™

EcoFlow™ - Electronic Expansion System Type EES EES are electrically operated expansion systems with integrated controller, designed for residential air conditioning and heat pump units.



Contact Us

For catalog requests, pricing, or partnerships, please visit:
<https://www.goodstays.co.za>