

Ratio of solar container battery field





Overview

For most applications, a good rule of thumb is to aim for a 1:1 ratio of batteries and watts or slightly more if you live in regions with limited sunlight, such as near the poles. The ratio depends on several factors, such as your daily energy consumption, location, energy needs of your solar setup (backup or off-grid), and budget constraints. For instance, a 20 kW solar container is a typical spec for rural clinics in Kenya. How much solar power does Liberia have?

YouTube [pdf] Oversizing panels to inverter capacity is a standard procedure, i. This allows the best possible output on cloudy months or mornings without engaging inverter. This component consists of energy storage in the form of lithium ion (Li-ion) batteries (energy storage system), which would be located on the Rugged solar farm site in order to store energy produced by CPV trackers and to provide the ability.



Ratio of solar container battery field

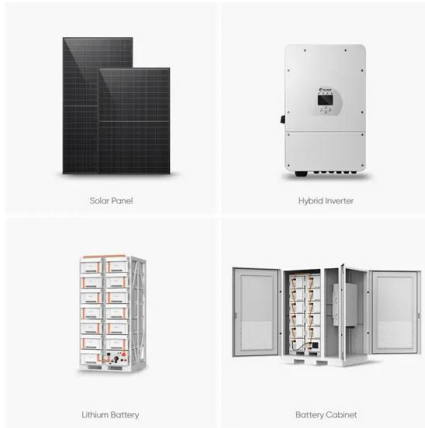


Figure 4 Example Battery Storage Container Illustration

The Li-ion batteries (cells) would be arranged into modules, which in turn would be stored in battery racks. The racks would be entirely contained within the container. The container ...

Mobile Solar Container Field Share Stock Photos

Electricity Solar Panels Green Energy Search among 10 authentic mobile solar container field stock photos, high-definition images, and pictures, or look at other power plant or green energy stock ...



How to Calculate Battery Capacity for Solar System?

Efficient battery capacity calculation is crucial for maximizing the benefits of a solar system. Whether it's an off-grid setup or a backup storage solution, understanding how to calculate ...



Grid-Scale Battery Storage: Frequently Asked Questions

Is grid-scale battery storage needed for renewable energy integration? Battery storage is one of several technology options that can enhance power system flexibility and enable high



levels of renewable ...



Mobile Solar Container Power Generation Efficiency

A mobile solar container is essentially a plug-and-play power station built inside a modified shipping container. It combines photovoltaic panels, charge controllers, inverters, and ...



Ratio of solar container battery field scale

For most applications, a good rule of thumb is to aim for a 1:1 ratio of batteries and watts or slightly more if you live in regions with limited sunlight, such as near the poles.



Battery Storage Container: A Key Solution for a Sustainable Energy

Discover how battery storage containers are revolutionizing Europe's energy landscape. Learn about Maxbo's large-scale, industrial-grade energy storage solutions, designed for commercial, industrial, ...





Mobile Solar Container Technical Parameters: What You Need to Know

Find the most crucial Mobile Solar Container Technical Parameters--ranging from PV capacity to inverter specifications--that make the performance of off-grid energy optimal. See how ...



Optimal battery ratio for solar panel pyramid

I think the optimal battery ratio per solar panel is much less than many of us have been using. It's 1.6 batteries per panel. Watch this: We only need to save enough power under the dome ...

Contact Us

For catalog requests, pricing, or partnerships, please visit:
<https://www.goodstays.co.za>