

Solar container battery fully charged voltage





Overview

The voltage reading for a fully charged 24-volt solar battery should be around 25. Here are the most common and effective ways to do it: Many solar batteries meant for renewable energy storage come with built-in charge indicators. A solar battery voltage chart is a crucial tool for monitoring the state of charge and health of batteries in solar energy systems. Conversely, when temperatures exceed 90°F, a solar battery will start to overheat, and so the voltage will need to be reduced so that it does not become overloaded. Evaluating excess energy and optimizing its usage can maximize the benefits of your solar power system.



Solar container battery fully charged voltage

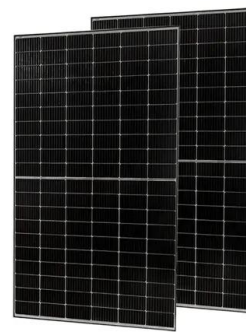


What is the voltage of a cylindrical solar container lithium battery ...

What is the voltage of a cylindrical solar container lithium battery pack What voltage is a solar battery? Solar batteries are typically 12V,24V,or 48V,with a fully charged 12V battery reading between 12.6V ...

Solar Battery Voltage Chart

A 12V solar battery is considered fully charged at 12.7 to 12.8 volts, and it should not be allowed to drop below 11.8 volts, as this can cause permanent damage. Solar battery voltage is ...



Battery Voltage Chart for Batteries Charged By Solar Panels

When a solar battery is exposed to temperatures below 30°F, it needs a higher voltage to reach its maximum charge. Conversely, when temperatures exceed 90°F, a solar battery will start to overheat, ...

What is the charging voltage of a 24V solar container lithium ...

A fully charged 24V lithium battery typically has a voltage around 28.8V to 29.6V,depending on the specific lithium chemistry. For 24V LiFePO4 batteries like those from DEESPAEK,the nominal



...



12.8V 200Ah



How to tell if solar energy is fully charged , NenPower

One of the most critical aspects involves tracking the battery voltage using a voltmeter, which can clearly suggest if the batteries have reached full charge. Fully charged batteries typically ...

Shop the Best Selection of which lithium ion battery solar container is

Find the perfect which lithium ion battery solar container is best in bratislava product at VEVOR. Shop a wide selection of high-quality which lithium ion battery solar container is best in bratislava, from ...



Optimal Voltage for LiFePO4 Charging: A Pro's Deep Dive

Consistently charging below 3.55V may not fully charge the battery and can make it difficult for the Battery Management System (BMS) to perform its cell balancing function effectively. ...

Efficient Higher Revenue

- Max. Efficiency 97.5%
- Max. PV Input Voltage 600V
- 150% Peak Output Power
- 2 MPPT Trackers, 150V DC Input Overvoltage
- Max. PV Input Current 15A, Compatible with High Power Modules

Intelligent Simple O&M

- IP66 Protection Degree: support outdoor installation
- Smart I-V Curve Diagnostic function locates PV string faults accurately and automatically detect faults
- DC & AC Type-II SPDs prevent lightning damage
- Battery Reverse Connection Protection

Flexible Abundant Configuration

- F1&2 Plus, UPS Switching Under 20ms
- Compatible with Lead acid and Lithium Batteries
- Max. 6 Units Inverters Parallel
- AFCI Function (Optional): when an arc fault is detected the inverter immediately stops operation



Deep Cycle Battery Voltage Chart

This chart helps you understand the relationship between the voltage and the state of charge for a 12V deep cycle battery. Properly monitoring these levels ensures optimal performance ...



MPPT bulk charge voltage vs sealed lead acid battery fully charged voltage

An unloaded, fully charged, sealed lead acid battery should read between approx. 12.6 to 12.8V on a multimeter across the terminals; In a 3 stage MPPT Bulk, Absorption, Float setup - the ...

How to Know if a Solar Battery is Fully Charged: Simple Tips and

Discover how to determine if your solar battery is fully charged with practical tips and essential insights in our comprehensive guide. Learn about different battery types, key components, ...



How to Know if Your Solar Battery is Fully Charged (I ...

In this comprehensive guide, we'll cover all the signs and tools to accurately determine your solar battery's state of charge. We'll also discuss what affects charging time, how to optimize ...



Battery voltage never goes above 13.4V. Is this a problem with my

I posted a few days ago asking about battery drain and someone came up with the idea that maybe my battery isn't actually fully charged Can anyone point to a potential issue with my charge controller ...



Ultimate Guide to Solar Battery Charging: SOC, Voltage, & BMS Tips

We'll break down SOC vs. voltage, fix charging issues, and share pro tips to keep your LiFePO4 or lead-acid battery in top shape. Plus, we've got charts and a handy formula to make it crystal clear.

Contact Us

For catalog requests, pricing, or partnerships, please visit:
<https://www.goodstays.co.za>