

Solar container box north-south direction





Overview

Centerline of container should align north-south in order to have best performing east and west facing solar arrays. Modules face two directions This system can accept six-twelve solar modules, of either 60 or 72 cell format (modules not included). Whether you're planning a new installation or optimizing an existing system, understanding solar panel direction and orientation is crucial for maximizing your system's efficiency in 2025.



Solar container box north-south direction

1mwh (500kw/1mw)
AIR COOLING
ENERGY STORAGE CONTAINER



How to Set Up a Mobile Solar Container Effectively

Learn how to set up a mobile solar container efficiently--from site selection and panel alignment to battery checks and EMS configuration. Avoid common mistakes and get real-world ...

Solar Panel Orientation: Everything You Need to Know

Solar panel orientation primarily refers to the placement, direction, and angle of solar panels, representing the direction they face, typically north, south, east, or west.



Outdoor unit installation (north/south alignment)

That is correct, in the southern hemisphere, you have to install the unit turned 180 degree so that the solar array can get the sunlight to charge the batteries. Then set the wind direction 180 degree offset ...



Installing Solar Panels on Shipping Containers: How-To & Tips

To maximise solar energy capture throughout the day, the shipping container should be positioned with its long sides running east to west. This ensures that the broad roof surface



faces ...



Solar Panel Direction & Orientation: 2025 Complete Guide

Discover the optimal direction and angle for solar panels to maximize energy output. Complete guide with calculations, tools, and location-specific recommendations for 2025.

Mounting several panels on top of a shipping container, without

The container's short ends face east-west, so one long edge faces south, the other faces north. Otherwise, the container is on top of a hill, no trees around it, perfectly clear view of the sky.



Adding solar panels in series facing different directions.

I have panels on both the south and east sides which is helpful in winter with the low sun angle having eastward panels but mine are in parallel into a combiner box so there is no issue. If ...



What's the Best Direction for Solar Panels?

In this video, I share the results of an analysis I conducted to find the best direction for solar panels to face. I used PVWatts to run an analysis for over 200 cities around the world.



Which direction must solar panels face, and what angle should they be

In the northern hemisphere, panels must face south, and north works best for the southern hemisphere. Now, the next question you might ask is, " Why south or north? Why not east or west? "

What is the Best Direction for Solar Panels to Face

Discover the best direction for solar panels and factors affecting energy output. Know why south-facing is ideal for solar panels and what its alternatives are.



Solar Panel Orientation: Find the Best Angle and Direction

Solar panel orientation refers to the compass direction that solar panels face when installed. This positioning determines which cardinal direction - north, south, east, or west - the ...



What is the best direction for solar panels in California?

South is the best direction for solar panels to face in California. South-facing panels perform better for homeowners because they can capture more sunlight and generate more ...

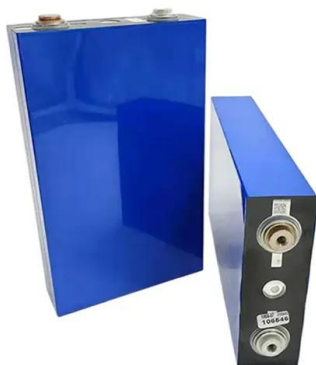


What effect does the installation angle and direction of the Solar

In the Northern Hemisphere, panels facing true south (azimuth angle 0°) receive the highest solar radiation throughout the year. This direction ensures sustained sunlight exposure ...

What is the right direction for my Solar Panels? Magnetic North/South

To get the maximum sunlight, the solar panels should be faced towards either True North or True South. Know how to find the True North/South line in this amaz



Solar Support for 20ft shipping container, two directions

Centerline of container should align north-south in order to have best performing east and west facing solar arrays. For 40ft containers, order two 20ft kits in order to achieve sufficient protection against ...



Contact Us

For catalog requests, pricing, or partnerships, please visit:
<https://www.goodstays.co.za>